



Harnessing Artificial Intelligence in Interior Design Education:

Experiences, Insights, and Recommendations

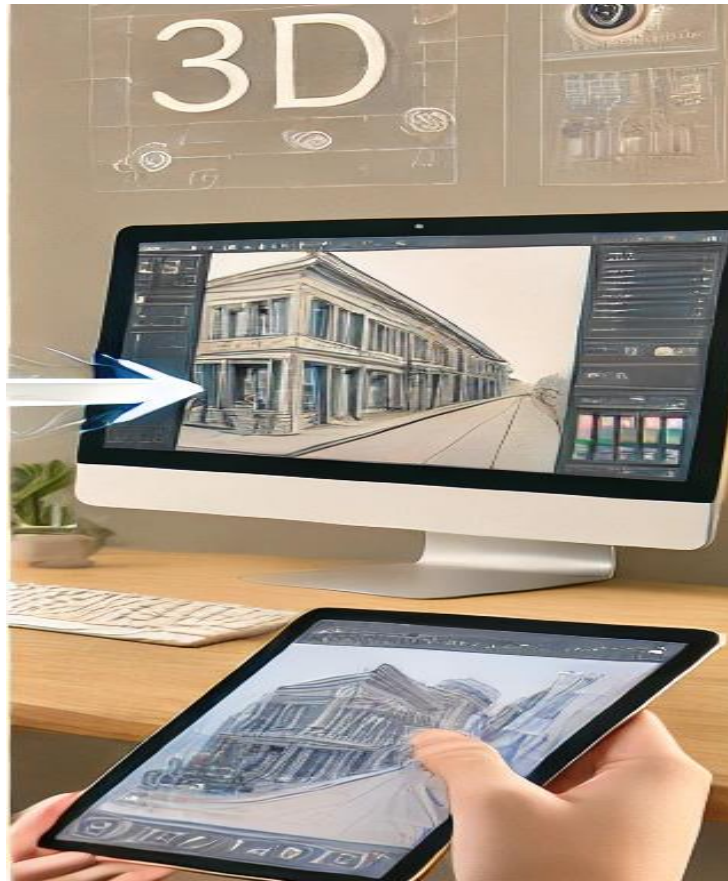
Dr. Mohamad Nadim Adi

TEXAS  STATE
UNIVERSITY[®]

MEMBER THE TEXAS STATE UNIVERSITY SYSTEM

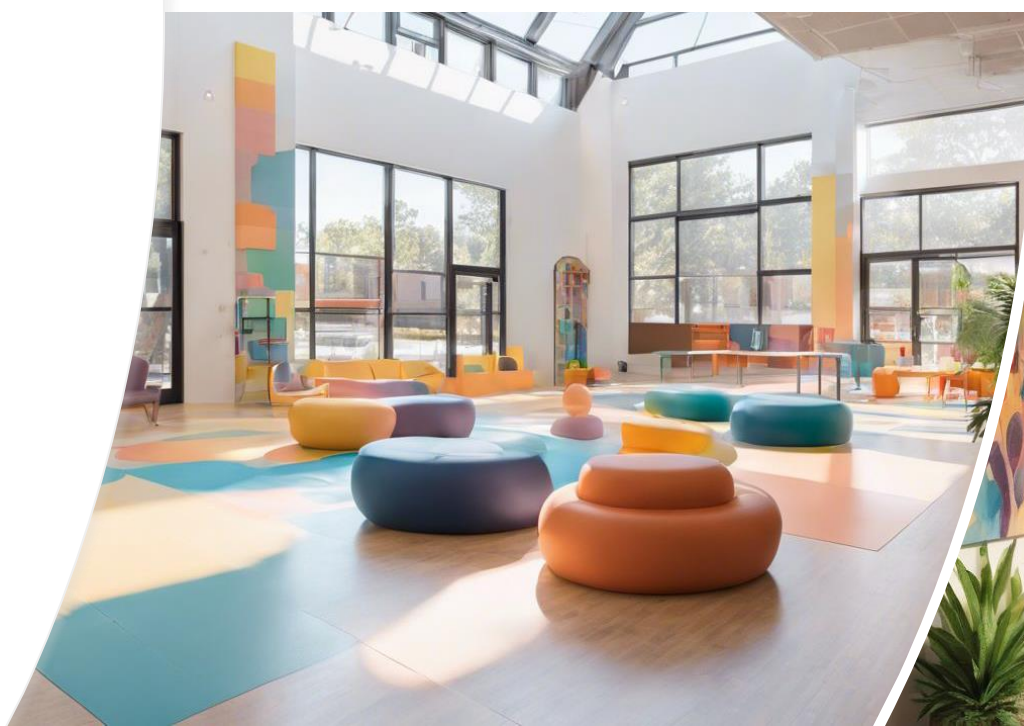
Why AI in Interior Design?

- Technological shifts in the design profession
- Student expectations vs. industry demands



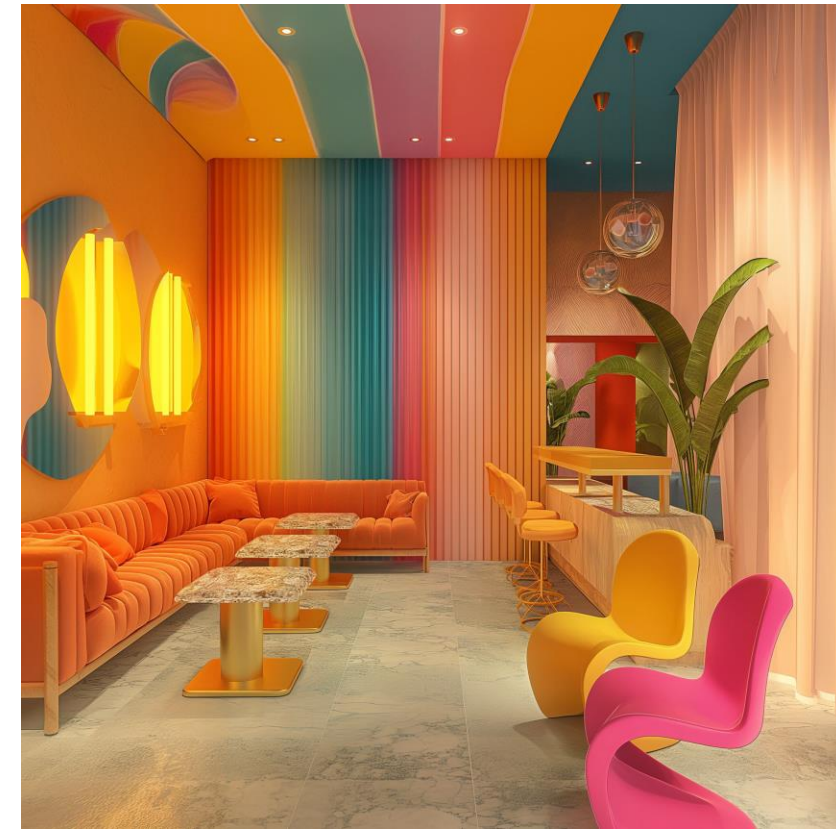
AI in Action – My Classroom Experience

- AI for generating concept imagery
- Bridging theory and modeling tools
- Use in visualizing abstract themes



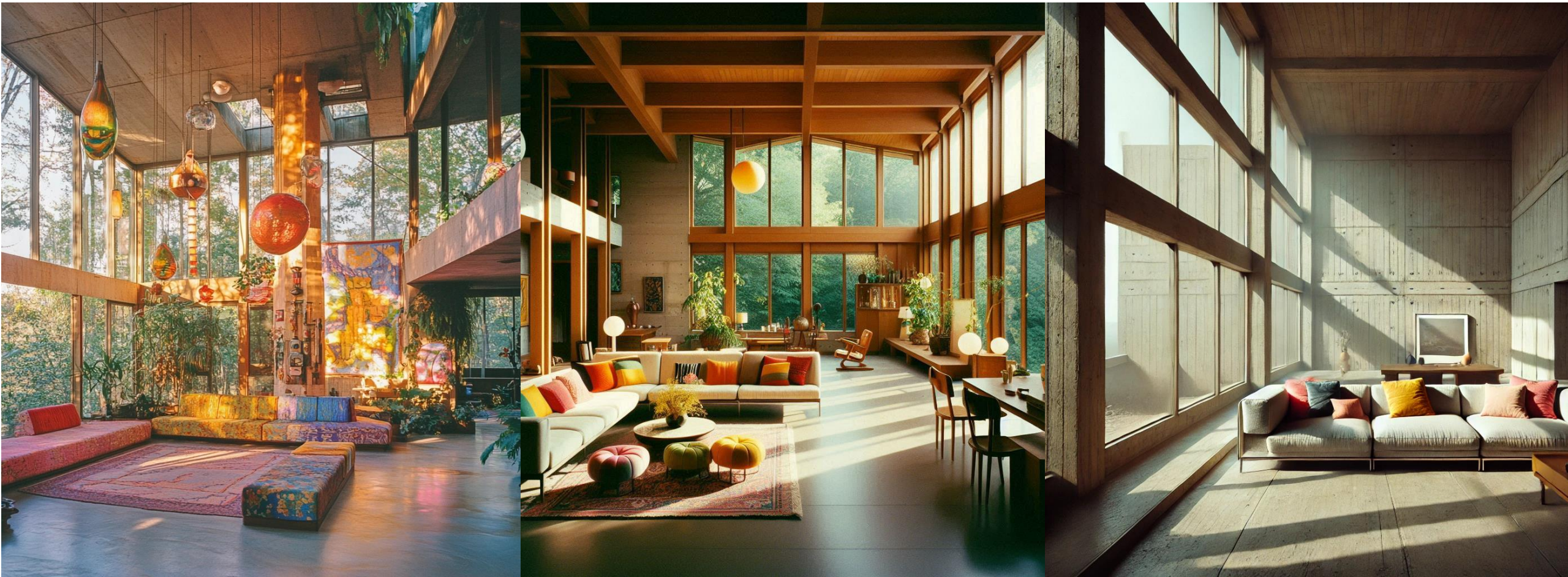
AI in Action – My Classroom Experience

“AI didn’t replace creativity—it redefined how students engage with it.”



Tools & Techniques

- Tools used: DALL·E, MidJourney, ChatGPT, Copilot



Interior of a Brutalist-style home with large windows allowing natural light to pour in. The room has a stark, concrete aesthetic with raw, unadorned walls.



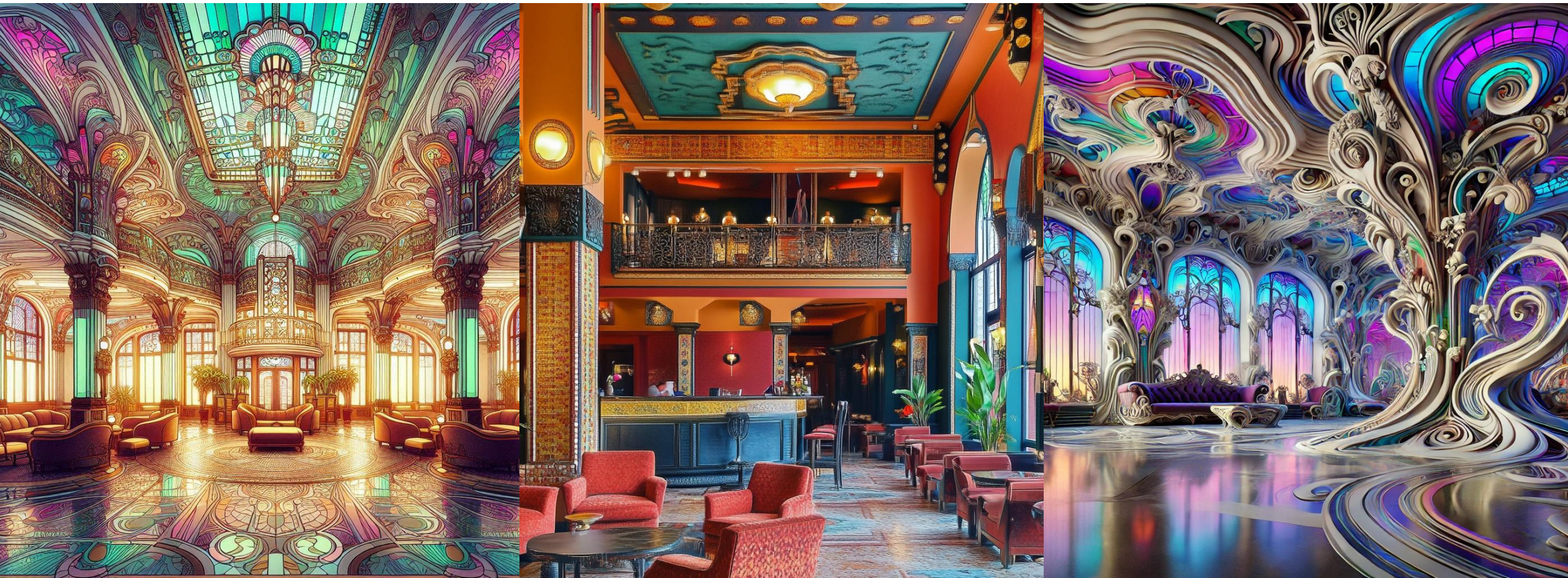
Residential interior design of a living room built with birch plywood, featuring built-in storage units and a primary color palette of red, blue, and yellow.



An abstracted interior design of a residential space that is ethereal and otherworldly, creating an environment that pushes the bounds of reality.



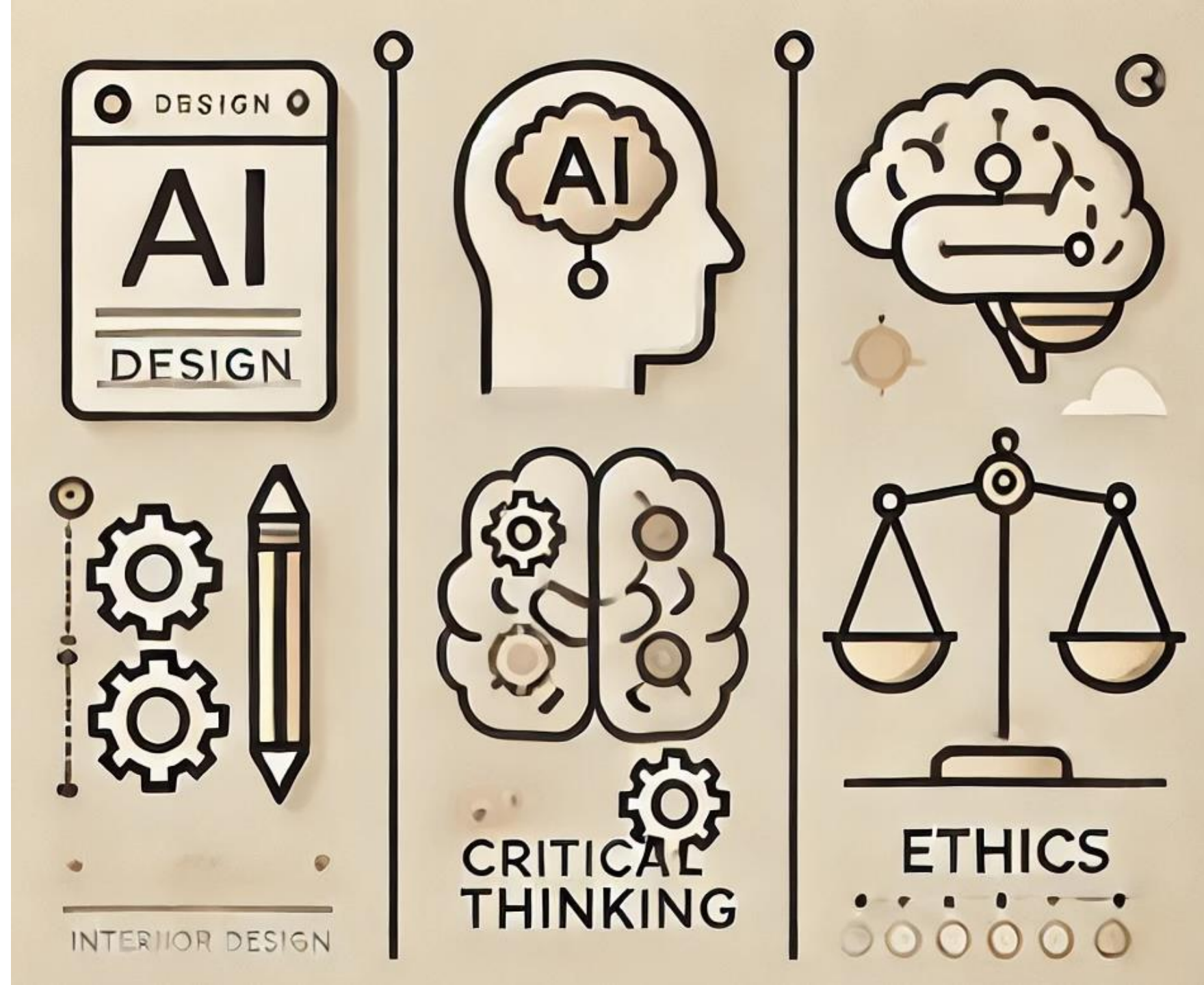
Residential interior design of a bedroom inspired by a collapsing star, featuring dramatic, cosmic-themed elements and an inter-dimensional portal effect.



Art Nouveau interior design of a hotel lobby, featuring flowing, organic lines and intricate, floral-inspired detailing typical of Art Nouveau.

Lessons Learned

- Common misconceptions about AI
- Ethical concerns and overreliance
- Importance of teaching AI literacy



Recommendations for Educators

- Integrate short AI literacy modules
- Encourage critical reflection on AI outputs
- Blend analog and digital workflows

“Prompt writing is the new sketching—it trains both precision and vision.”

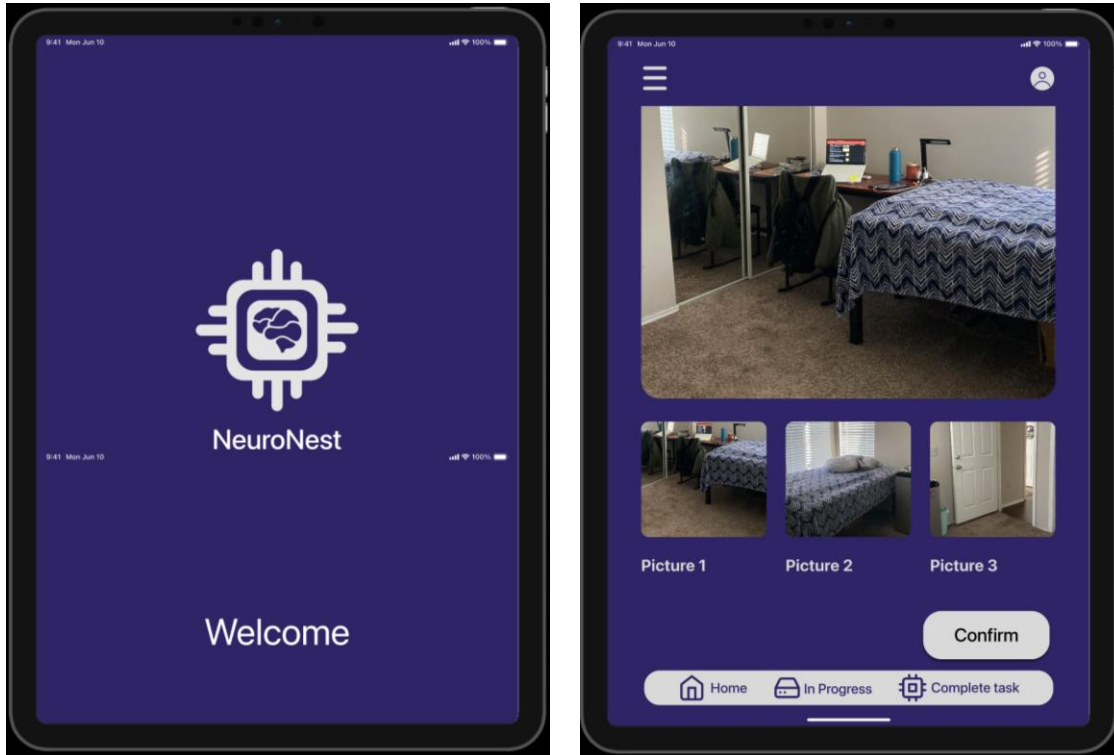
The Studio of the Future

- Vision of collaborative AI-human design studios
- Role of educators as ethical and creative guides

“Designing with AI is not about replacing the hand—it’s about amplifying the mind.”



Applying VR + AI in Design

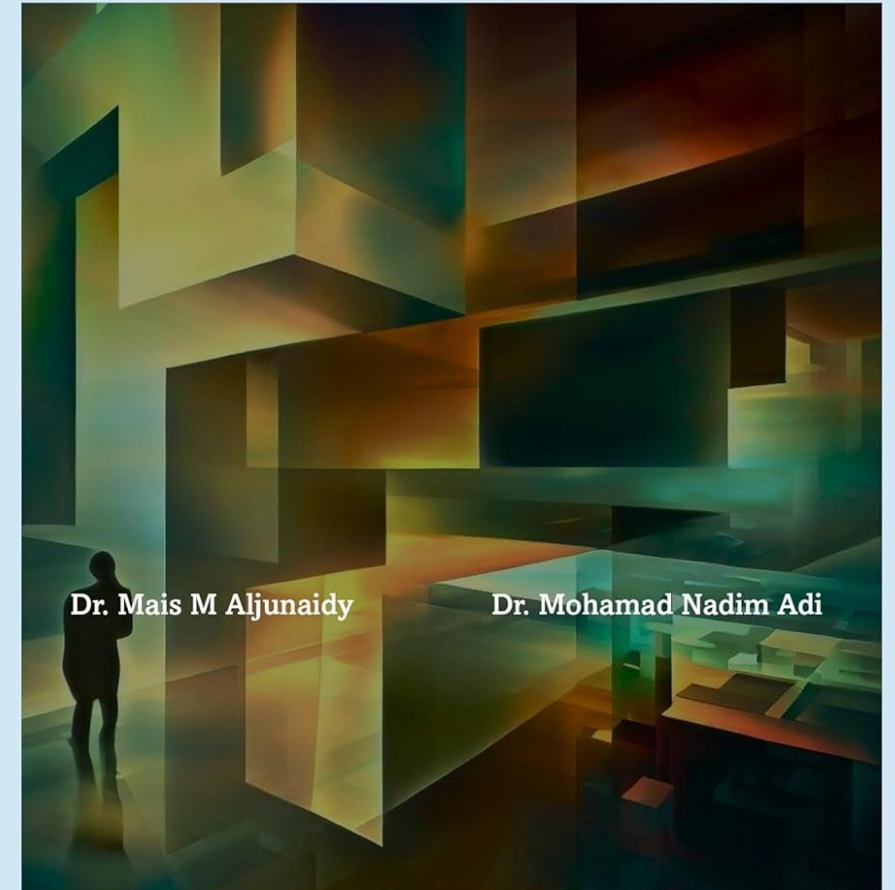


NeuroNest is an innovative tool that leverages AI to support designers in creating safer, more accessible environments for users with Dementia.

Selected Publications

- An Introduction to Architectural Psychopathology (2024).
- VR and Dementia-Friendly Hospital Design (Adi & Aljunaidy, 2020).
- AI and Mental Disorder Art Therapy (Adi & Aljunaidy, 2024).

An Introduction to Architectural Psychopathology



2024 - First Edition

Thank You!

Contact me please:

Nadim.adi@txstate.edu

